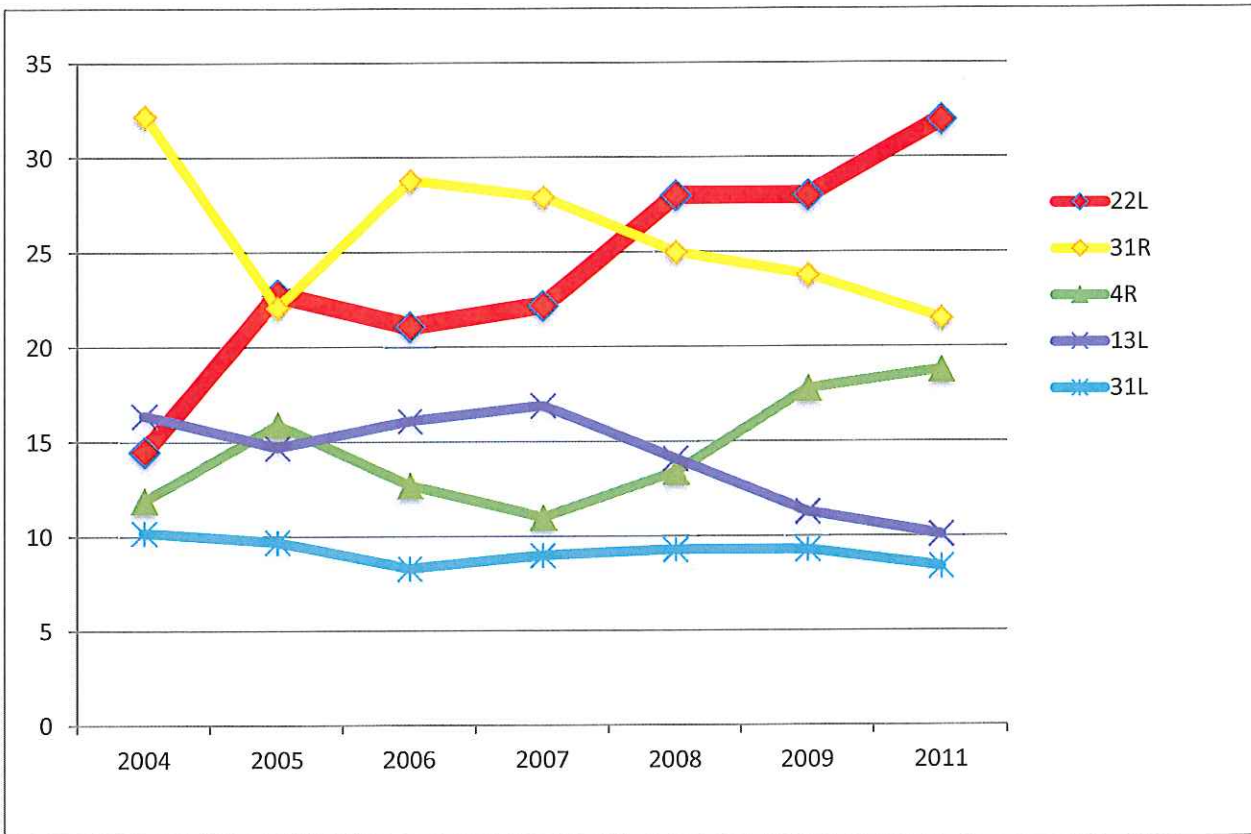


REDISTRIBUTION OF AIR TRAFFIC: As shown below, arrivals at JFK have leveled off and actually decreased since 2007. Yet, the share of arrivals going into Runway 22L has sky rocketed.

<i>Growth of Overall</i>	2004	2005	2006	2007	2008	2009	2011
<i># of Arrivals at JFK</i>	174599	190933	202482	240581	228987	213219	211576
<i>Growth of 22L Arrivals</i>	25338	43666	42720	53432	64046	59962	67612

CHART 1
PROPORTIONATE SHARE OF ALL JFK ARRIVALS BY RUNWAY (%)

	2004	2005	2006	2007	2008	2009	2011
22L	14.5	22.8	21.1	22.2	28	28	32
31R	32.2	22.1	28.8	27.9	25	23.8	21.5
4R	11.9	15.9	12.7	11	13.4	17.8	18.8
13L	16.4	14.7	16.1	16.9	14.1	11.3	10.1
31L	10.2	9.7	8.3	9	9.3	9.3	8.4



Note: All numbers are from official Port Authority reports provided through FIOA requests. 2010 has been excluded due to the Bay Runway Construction project skewing numbers.

For more info, please visit WWW.QUIETOVERGC.COM